

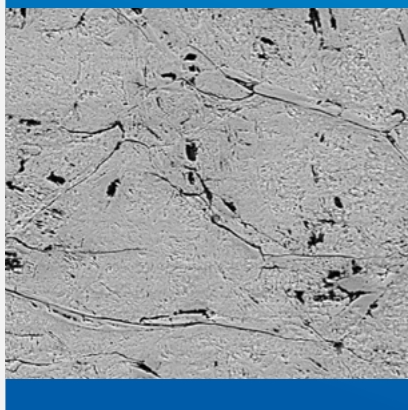
Mobil SHC™ Gear 320 WT

Here to make life a breeze.

Wind power is one of the world's fastest-growing renewable energy technologies, but that doesn't make it a breeze. The challenges of wind turbine operation mean it's not enough to be able to fix problems when they occur. Operators need reliable strategies to predict and prevent them.

Micro cracks, macro problems

White Etching Cracking (WEC) is the development of microscopic fissures that occur without warning under the surface of bearings. These then propagate, causing bearing failure, costly damage and downtime.



Mobil SHC™ Gear 320 WT is ExxonMobil's next generation wind turbine gearbox lubricant. It has been formulated in collaboration with leading OEMs to protect and enhance productivity in even the most extreme conditions.

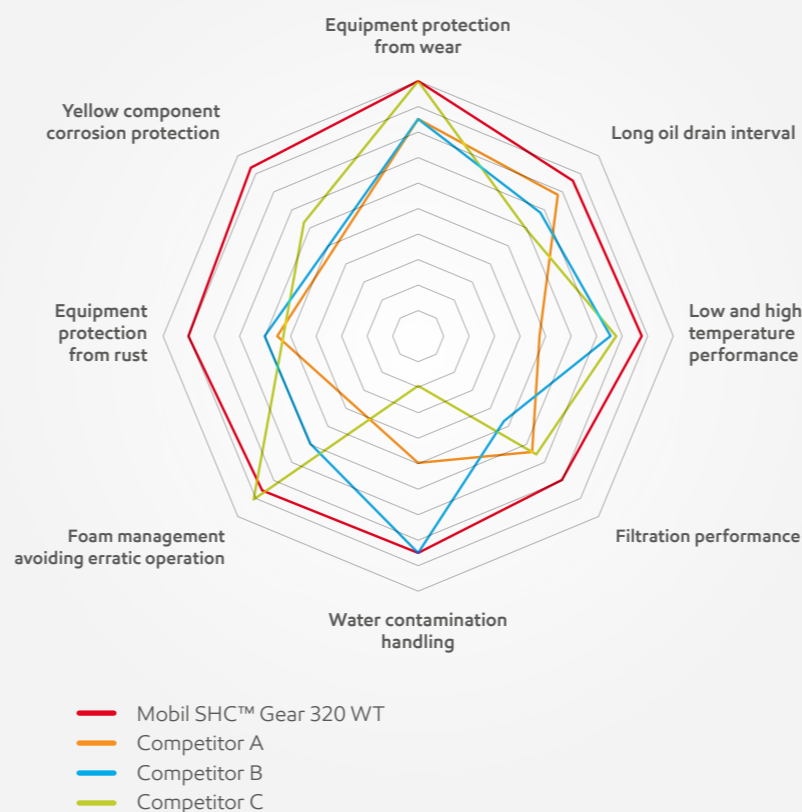
First line of defence against WEC

Around 60% of wind turbine high-speed bearing failures result from White Etching Cracking (WEC). Mobil SHC Gear 320 WT is the first wind turbine gear oil certified to not contribute to the oil-related effects of WEC by global independent certification body, DNV-GL.

Excellent foam control

Excessive foam can cause wind operators erratic and costly unit shutdowns as well as unreliable power generation. Mobil SHC Gear 320 WT offers outstanding resistance to foaming, helping to ensure reliability of electricity generation and avoiding expensive oil change outs.

Performance at a glance



Performance test summary

In extensive testing of the most crucial performance and protecting categories, Mobil SHC Gear 320 WT performs excellent in all categories and often better when compared to leading wind turbine oil competitors.

Extending oil drain intervals

As an oil ages, deposits and sludge caused by degradation can have an impact on performance and operation. Mobil SHC Gear 320 WT's special patented technology with low sulphur, demonstrates exceptionally high resistance to oil aging, helping to extend drain intervals and protect the integrity and operation of this highly expensive asset.

The toughest yet

As wind turbines turn with increasing loads in incredibly harsh environments, a gear oil's ability to prevent wear is critical.

In creating Mobil SHC Gear 320 WT, our scientists designed a patented additive combination that delivers enhanced protection against micropitting and scuffing, helping to protect the equipment in harsh and severe conditions.

Approved by the world's leading OEMs

Mobil SHC Gear 320 WT has an extensive range of **Equipment Builder approvals**, helping mixed fleet owners streamline their lubricants inventory.

Peace of mind with Mobil ServSM

Using state-of-the-art technology, our experienced Mobil™ engineers are trained to help predict and resolve the causes of unscheduled downtime, helping ensure operators' staff can remain on the ground.

New heights of clean

Mobil SHC Gear 320 WT meets the stringent, solid particle cleanliness requirements of ISO 4406 classification -/14/11 as required by the industry design standard ISO 61400-4, helping to protect the gearbox and reduce the need for pre-filtration.



Our extensive range of specialist services along with a range of newly-developed offers can help enhance operations and reduce downtime.

10 year warranty

Subject to the terms and conditions of the warranty, the company will bear any costs required and adequate to repair and/or replace any equipment damaged as a result of a lubricant defect or malfunction."